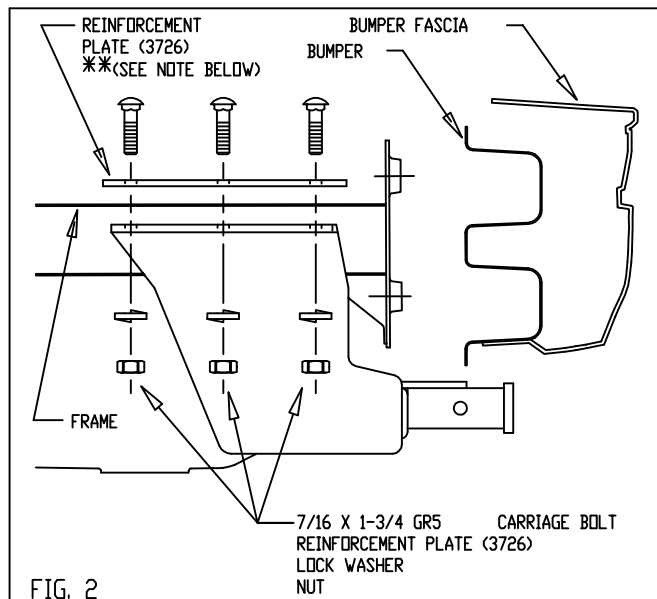
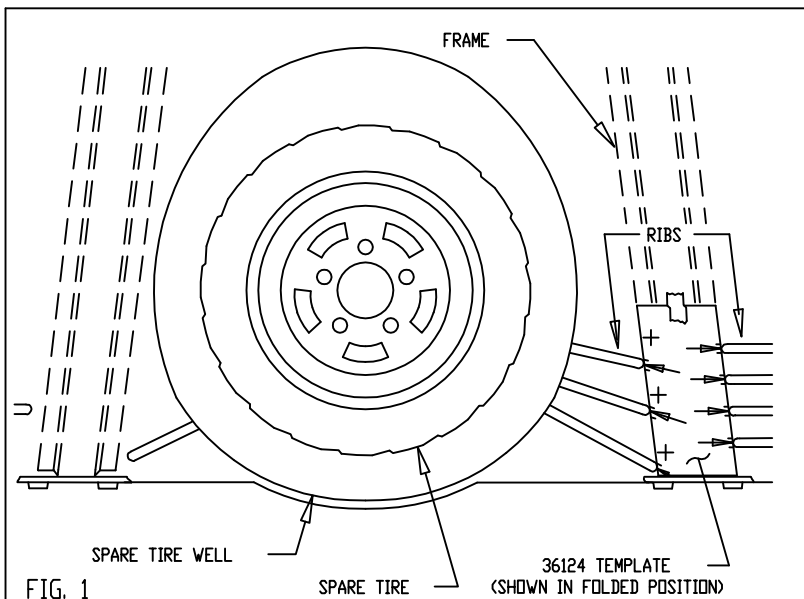


INSTALLATION INSTRUCTIONS

EQUIPMENT REQUIRED: TAPE, GLUE
 WIRING ACCESS LOCATION: PC3, PC4
 DRILL BITS: 1/8, 7/16, 9/16
 WRENCHES: (TIGHTEN ALL FASTENERS WITH TORQUE WRENCH) 10mm, 15mm, 11/16 (DEEP SOCKET)

VEHICLE

BUICK REGAL
 CHEVROLET LUMINA COUPE &
 SEDAN
 OLDSMOBILE CUTLASS SUPREME
 PONTIAC GRAND PRIX
 EXTRA INSTALLATION TIME REQUIRED



FOR MODELS WITH DUAL MUFFLERS _____ !
 LOWER DRIVER'S SIDE MUFFLER.

FOR PONTIAC GRAND PRIX - S.E. MODEL ONLY _____ !

REMOVE THE TWO (2) PLASTIC TOW PADS CONNECTED TO THE BOTTOM OF THE BUMPER AND RETURN TO CUSTOMER.

- LOWER PASSENGER'S SIDE MUFFLER. REMOVE EXHAUST SHIELD (THIS STEP PROVIDES WRENCH ACCESS).
- REMOVE THE VERTICAL PANEL AT THE REAR OF THE INSIDE OF THE TRUNK. MOVE THE CARPETING AND REMOVE THE SPARE TIRE COVER TO ALLOW ACCESS TO TRUNK PAN. IT WILL BE NECESSARY TO UNGLUE THE CARPET PAD ON PASSENGER'S SIDE.
- HOW TO USE THE 36124 TEMPLATE _____ * (SHEET 2 OF INSTRUCTIONS):
 - CUT OR FOLD TEMPLATE ALONG THE TWO PARALLEL DASHED LINES.
 - PLACE TEMPLATE INSIDE TRUNK ON PASSENGER'S SIDE OF SPARE TIRE WELL, SEE FIG. 1.
 - TEMPLATE SHOULD BE POSITIONED SO THAT ALL THE ARROWS LINE UP WITH THE CENTERS OF THE RIBS IN THE TRUNK PAN.
 - TAPE TEMPLATE IN PLACE ONCE ALL THE ARROWS ARE LINED UP.
- CENTER PUNCH THREE (3) PLACES AS SPECIFIED ON 36124 TEMPLATE. REMOVE TEMPLATE. DRILL THREE (3) 1/8" HOLES DOWN THROUGH TRUNK PAN AT CENTER PUNCHED LOCATIONS. CHECK HOLE ALIGNMENT UNDER VEHICLE AND ADJUST AS NECESSARY. ENLARGE HOLES TO 9/16".
- NOTE: YOU MAY WISH TO TRANSFER THE 36124 TEMPLATE TO A STIFFER MATERIAL FOR USE ON FUTURE INSTALLATIONS.
- POSITION REINFORCEMENT PLATE (3726) INSIDE TRUNK, BETWEEN THE TWO ROWS OF RIBS SO THAT THE HOLES IN THE PLATE LINE UP WITH THE HOLES DRILLED IN STEP 4.
- POSITION HITCH ON VEHICLE AS IN FIG. 2. INSTALL 7/16 CARRIAGE BOLTS DOWN THROUGH REINFORCEMENT PLATE (3726) AND TRUNK PAN INTO HITCH. FASTEN WITH LOCK WASHERS AND NUTS.
- POSITION DRIVER'S SIDE OF HITCH THE SAME DISTANCE FROM THE END OF THE FRAME AS THE PASSENGER'S SIDE. USING DRIVER'S SIDE OF HITCH AS A TEMPLATE, CENTER PUNCH AND DRILL THREE (3) 7/16" HOLES UP INTO TRUNK PAN. HOLES MAY BE ENLARGED FROM THE INSIDE OF THE TRUNK IF NEEDED.
- POSITION OTHER REINFORCEMENT PLATE (3726) ON DRIVER'S SIDE AS DESCRIBED IN STEP 5. INSTALL 7/16 CARRIAGE BOLTS DOWN THROUGH REINFORCEMENT PLATE (3726) AND TRUNK PAN INTO HITCH. FASTEN WITH LOCK WASHERS AND NUTS.
- USING REINFORCEMENT PLATE (3726) AS A TEMPLATE, DRILL THREE (3) 7/16" HOLES (OUTBOARD OF HOLES DRILLED EARLIER), EACH SIDE, THROUGH TRUNK PAN. INSTALL REMAINING 7/16 CARRIAGE BOLTS AND FASTEN WITH LOCK WASHERS AND NUTS.
- NOTE: SEAL ALL HOLES DRILLED IN VEHICLE TO PREVENT ENTRY OF EXHAUST FUMES INTO TRUNK.

TIGHTEN ALL 7/16 GR5 FASTENERS TO 50 LB.-FT.

- REINSTALL THE EXHAUST SHIELD. RECONNECT THE PASSENGER'S SIDE MUFFLER.
- REGLUE CARPET PAD INSIDE TRUNK ON PASSENGER'S SIDE. REPLACE THE INSIDE TRUNK PANEL, SPARE TIRE COVER, AND CARPETING REMOVED IN STEP 2.

FOR MODELS WITH DUAL MUFFLERS _____ !

RECONNECT DRIVER'S SIDE MUFFLER.

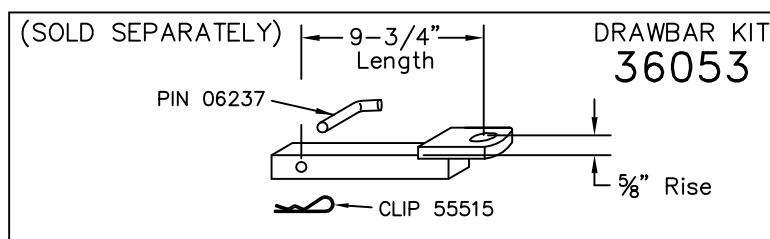
FOR MODELS WITH SPECIAL TRIM PACKAGES _____ !

MINIMAL FASCIA TRIMMING MAY BE REQUIRED TO ALLOW DRAWBAR INSTALLATION - GET CUSTOMER APPROVAL FIRST.

FOR MODELS WITH CARGO NET OPTION _____ !

WITH REINFORCEMENT BRACKET (3726) IN POSITION, CARGO NET TIE-DOWN HOOK CANNOT BE PROPERLY REINSTALLED. CARGO NET TIE-DOWN HOOK MUST BE REPOSITIONED SUCH THAT IT DOES NOT AFFECT POSITION OF THE REINFORCEMENT PLATE.

** NOTE: REINFORCEMENT PLATES (3726) MUST BE INSTALLED AS DESCRIBED ABOVE TO INSURE SAFETY.



USE ONLY THE DRAWBAR SHOWN FOR CORRECT BUMPER CLEARANCE AND HEIGHT.
 DRAWBAR MUST BE USED IN THE RISE POSITION ONLY.
 THIS PRODUCT COMPLIES WITH SAFETY SPECIFICATIONS AND REQUIREMENTS FOR CONNECTING DEVICES AND TOWING SYSTEMS OF THE STATE OF NEW YORK, V.E.S.C. REGULATION V-5 AND SAE J684.

APPROX WEIGHT (LB.)

39

FASTENER KIT

01130-588

NOTE: Check hitch frequently, making sure all fasteners and ball are properly tightened. If hitch is removed, plug all holes in trunk pan or other body panels to prevent entry of water and exhaust fumes. A hitch or ball which has been damaged should be removed and replaced. Observe safety precautions when working beneath a vehicle and wear eye protection. Follow car maker's specs for maximum trailer weight and tongue weight. Do not cut access or attachment holes with a torch.

Cequent Performance Products
 Plymouth, Michigan

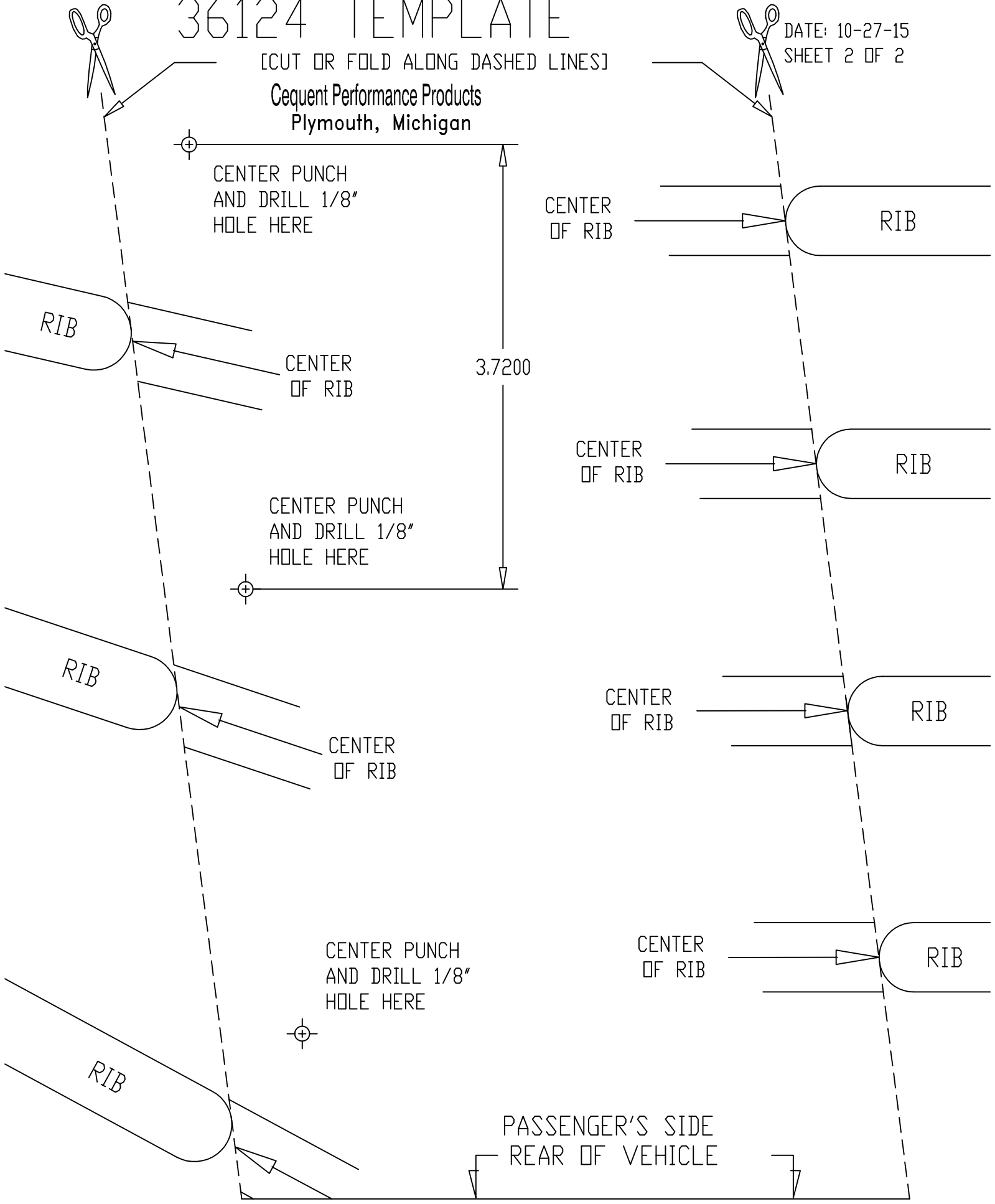
PRINTED IN MEXICO

36124 TEMPLATE

[CUT OR FOLD ALONG DASHED LINES]

Gequent Performance Products
Plymouth, Michigan

DATE: 10-27-15
SHEET 2 OF 2



CENTER PUNCH
AND DRILL 1/8"
HOLE HERE

CENTER
OF RIB

RIB

3.7200

CENTER
OF RIB

CENTER PUNCH
AND DRILL 1/8"
HOLE HERE

CENTER
OF RIB

RIB

CENTER
OF RIB

CENTER
OF RIB

RIB

CENTER PUNCH
AND DRILL 1/8"
HOLE HERE

CENTER
OF RIB

RIB

PASSENGER'S SIDE
REAR OF VEHICLE