

# INSTALLATION INSTRUCTIONS

VEHICLE	HITCH NO.
TOYOTA PICKUP	75031 87472

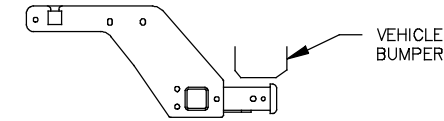
**EQUIPMENT REQUIRED:**

**WIRING ACCESS LOCATION:** PU1, PU2

**DRILL BITS:**

HITCH REQUIRES 5/8" PIN AND CLIP IF STABILIZING PIN IS NOT INSTALLED.

**WRENCHES:** (TIGHTEN ALL FASTENERS WITH TORQUE WRENCH) 11/16, 3/4, 7/8



HITCH SHOWN IN PROPER POSITION

**NOTE:**

ALL FASTENERS TYPICAL  
BOTH SIDES OF VEHICLE  
HITCH SHOWN IN PROPER POSITION

DO NOT EXCEED LOWER OF TOWING VEHICLE MFR'S RATINGS OR

HITCH TYPE	MAX GROSS TRLR WT(LB)	MAX TONGUE WT(LB)
WEIGHT DISTRIBUTING	5500	550
WEIGHT CARRYING BALL MOUNT	5000	500

- 1/2-13 X 4.00 GR5
- 3/8 X 1-1/2 X 3 BLOCK (1077-011)
- FLAT WASHER
- LOCK WASHER
- NUT

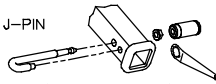
ADDITIONAL BUMPER BRACKET PRESENT ON SOME MODELS SEE FIGURE 2

- 1/2-13 X 1-3/4 GR5 CONICAL TOOTHED WASHER
- CONICAL TOOTHED WASHER
- NUT

- 1/2-13 X 1-3/4 GR5 CONICAL TOOTHED WASHER
- 3/16 X 1 X 2 BLOCK (1336)
- CONICAL TOOTHED WASHER
- NUT

- 1/2-20 X 1-1/2 GR5 FLAT WASHER (HARDENED)
- FLANGED LOCKNUT

**OPTIONAL LOCKING STABILIZING PIN**



(Order Separately)

FIGURE 1

THIS PRODUCT COMPLIES WITH SAFETY SPECIFICATIONS AND REQUIREMENTS FOR CONNECTING DEVICES AND TOWING SYSTEMS OF THE STATE OF NEW YORK AND V.E.S.C. REGULATION V-5.

APPROX WEIGHT (LB.)	FASTENER KIT NO.
53	1130-613

NOTE: Check hitch frequently, making sure all fasteners and ball are properly tightened. If hitch is removed, plug all holes in trunk pan or other body panels to prevent entry of water and exhaust fumes. A hitch or ball which has been damaged should be removed and replaced. Observe safety precautions when working beneath a vehicle and wear eye protection. Follow car maker's specs for maximum trailer weight and tongue weight. Do not cut access or attachment holes with a torch.



Canton, Michigan

# INSTALLATION INSTRUCTIONS

VEHICLE	HITCH NO.
TOYOTA PICKUP	75031 87472

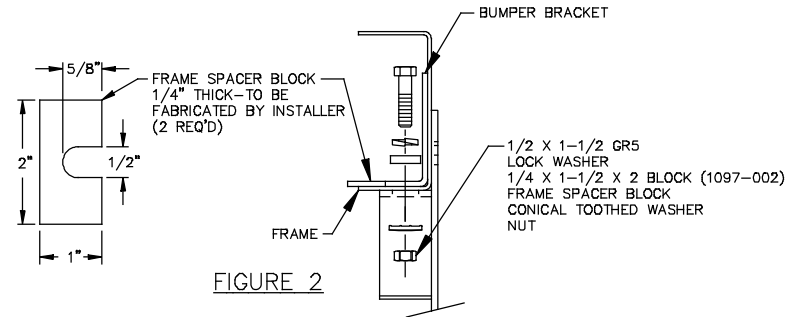


FIGURE 2

**VEHICLES WITH BUMPERS**

1. REMOVE BUMPER FROM BRACKETS
2. REMOVE BRACKETS FROM FRAME.
3. REMOVE ALL BUT A THIN LAYER OF UNDERCOATING FROM ATTACHING SURFACES.
4. POSITION SIDE BRACKETS ON FRAME.
5. INSERT 1/2 X 4.00 GR5 HEX BOLT, 3/8 X 1-1/2 X 3 BLOCK (1077-011), FLAT WASHER, LOCK WASHER & NUT INTO FORWARD MOST HOLES OF FRAME, EACH SIDE. SEE FIGURE 1.
6. LOOSELY INSTALL 1/2 X 1-1/2 GR5 HEX BOLT, LOCK WASHER, & 1/4 X 1-1/2 X 2 BLOCK (1097-002) AT BOTTOM OF FRAME RAIL INTO SIDE ARM SUPPORTS OF HITCH, EACH SIDE. LOOSELY INSTALL CONICAL TOOTHED WASHERS AND NUTS. SEE FIGURE 2.
7. POSITION CROSSTUBE ASSEMBLY. INSTALL 1/2-20 X 1-1/2 HEX BOLTS, 1/2 HARDENED FLAT WASHERS AND 1/2-20 FLANGED LOCKNUTS. TIGHTEN TO 95 LB.-FT.
8. **VEHICLES WITH BUMPER BRACKETS ON OUTSIDE OF FRAME**  
INSTALL BUMPER BRACKETS SO SIDE BRACKETS ARE SANDWICHED BETWEEN FRAME AND BUMPER BRACKETS. INSTALL FASTENERS AS SHOWN IN FIGURE 1.  
**VEHICLES WITH BUMPER BRACKETS ON INSIDE OF FRAME**  
INSTALL BUMPER BRACKETS IN ORIGINAL POSITION WITH SIDE BRACKET POSITIONED ON OUTSIDE OF FRAME. INSTALL FASTENERS AS SHOWN.  
**VEHICLES WITH BUMPER BRACKETS ON INSIDE AND OUTSIDE OF FRAME**  
REVERSE INSIDE BUMPER BRACKETS (LEFT FOR RIGHT/RIGHT FOR LEFT) AND INSTALL ON OUTSIDE OF FRAME SO SIDE BRACKETS ARE SANDWICHED BETWEEN FRAME AND BUMPER BRACKETS. INSTALL FASTENERS AS SHOWN IN FIGURE 1.  
**NOTE:** VEHICLES WITH BUMPER BRACKETS ON INSIDE OR INSIDE/OUTSIDE OF FRAME MAY REQUIRE FABRICATION OF FRAME SPACER BLOCKS (2 REQ'D) BY INSTALLER. SEE FIGURE 2.
9. ATTACH BUMPER TO BRACKETS. INSTALL 1/2 X 1-3/4 GR5 BOLTS, CONICAL TOOTHED WASHERS AND NUTS AS SHOWN.  
**NOTE:** VEHICLES WITH BUMPER BRACKETS ON OUTSIDE OF FRAME REQUIRE TWO (2) 3/16 X 1 X 2 BLOCKS (1336) AT EACH ATTACHMENT AS SPACERS. VEHICLES WITH BUMPER BRACKETS ON INSIDE OF FRAME REQUIRE NO SPACERS. TIGHTEN 1/2-13 GR5 FASTENERS TO 75 LB.-FT.

**VEHICLES WITHOUT BUMPERS**

1. REMOVE ALL BUT A THIN LAYER OF UNDERCOATING FROM ATTACHING SURFACES.
2. POSITION SIDE BRACKETS ON FRAME.
3. INSERT 1/2 X 4.00 GR5 HEX BOLT, 3/8 X 1-1/2 X 3 BLOCK (1077-011), FLAT WASHER, LOCK WASHER & NUT INTO FORWARD MOST HOLES OF FRAME, EACH SIDE. SEE FIGURE 1.
4. LOOSELY INSTALL 1/2 X 1-1/2 GR5 HEX BOLT, LOCK WASHER, & 1/4 X 1-1/2 X 2 BLOCK (1097-002) AT BOTTOM OF FRAME RAIL INTO SIDE ARM SUPPORTS OF HITCH, EACH SIDE. LOOSELY INSTALL CONICAL TOOTHED WASHERS AND NUTS. SEE FIGURE 2.
5. POSITION CROSSTUBE ASSEMBLY. INSTALL 1/2-20 X 1-1/2 HEX BOLTS, 1/2 HARDENED FLAT WASHERS AND 1/2-20 FLANGED LOCKNUTS. TIGHTEN TO 95 LB.-FT.
6. INSTALL REMAINING FASTENERS AS SHOWN.  
TIGHTEN 1/2-13 GR5 FASTENERS TO 75 LB.-FT.

THIS PRODUCT COMPLIES WITH SAFETY SPECIFICATIONS AND REQUIREMENTS FOR CONNECTING DEVICES AND TOWING SYSTEMS OF THE STATE OF NEW YORK AND V.E.S.C. REGULATION V-5.

APPROX WEIGHT (LB.)	FASTENER KIT NO.
53	1130-613

NOTE: Check hitch frequently, making sure all fasteners and ball are properly tightened. If hitch is removed, plug all holes in trunk pan or other body panels to prevent entry of water and exhaust fumes. A hitch or ball which has been damaged should be removed and replaced. Observe safety precautions when working beneath a vehicle and wear eye protection. Follow car maker's specs for maximum trailer weight and tongue weight. Do not cut access or attachment holes with a torch.



Canton, Michigan